

## The Lord Charles Hotel – General Layout

- 1. Garden Terrace Restaurant
- 2. La Vigna Restaurant
- 3. Wine Cellar
- 4. St Andrews, 19<sup>th</sup> Hole Pub & Bar
- 5. Lobby / Lounge
- 6. Reception
- 7. Amsterdam
- 8. Somerset 1
- 9. Somerset 2
- 10. Somerset 3

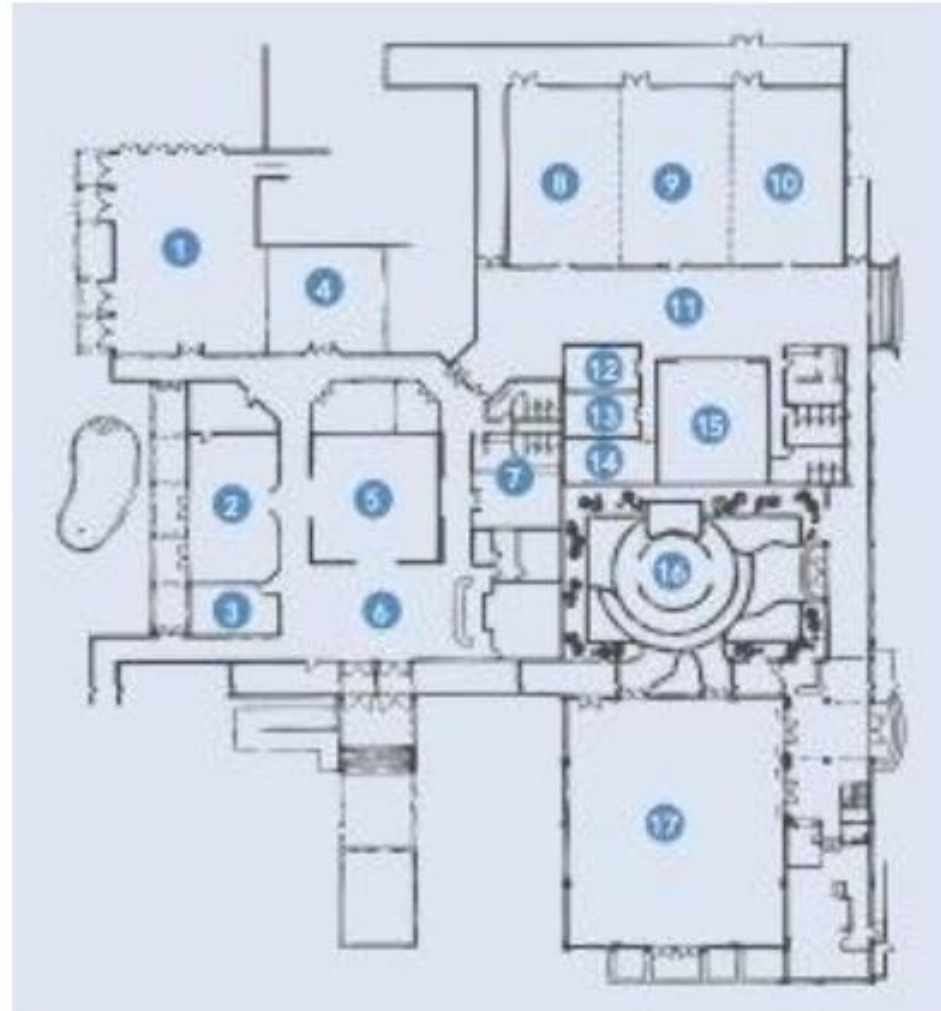
11. Pre-Assembly

Area B

- 12. Lourensford
- 13. Cloetenberg
- 14. Morgenster
- 15. Vergelegen
- 16. Courtyard

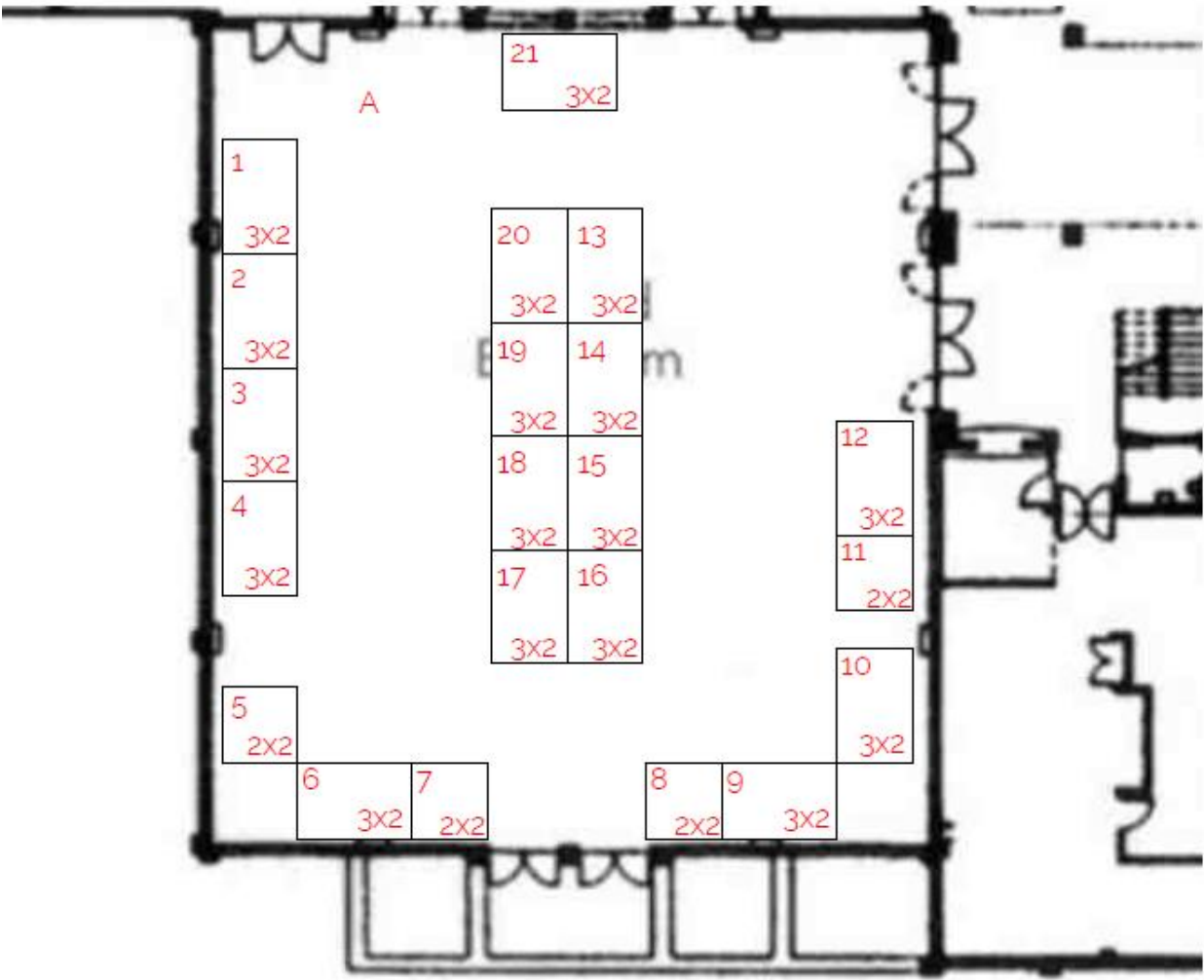
17. Grand Ball Room

Area A



# Area A – The Grand Ballroom

Stand #	Company	Stand #	Company
A1 (3x2)	Phoenix Geophysics Ltd	A15 (3x2)	Mount Sopris Instruments & ALT
A2 (3x2)	Geotron-Scintrex	A16 (3x2)	CGG Aviation
A3 (3x2)	Spectrem Air Proprietary Ltd	A17 (3x2)	Aarhus GeoSoftware
A4 (3x2)	IAGSA	A18 (3x2)	Geosoft
A5 (2x2)	Aarhus Geophysics	A19 (3x2)	SkyTEM
A6 (3x2)	AEGIS Instruments	A20 (3x2)	Council of GeoScience
A7 (2x2)	Geofocus	A21 (3x2)	Red Dog Scientific Services
A8 (2x2)	Geotech Ltd		
A9 (3x2)	GeoDuster/Medusa		
A10 (3x2)	Assegai Geophysics		
A11 (2x2)	Geovista		
A12 (3x2)	Hiseis – 3D Seismic Imaging		
A13 (3x2)	Council of GeoScience		
A14 (3x2)	New Resolution Geophysics		



① Plan View  
1 : 150

# Area B – The Pre-assembly area

Stand #	Company
B1 (2x2)	Registration Booth
B2 (3x2)	GEM Systems
B3 (2x2)	SEG
B4 (2x2)	Global Technical Solutions
B5 (2x2)	GELIOS
B6 (2x2)	SACNASP
B7 (3x2)	Petroleum Agency
B8 (3x2)	Digital Surveying
B9 (3x2)	EMIT
B10 (2x2)	Geoline Services
B11 (2x2)	EAGE
B12 (3x2)	Instrumentation GDD

